



# Remote Kit – Inbuilt USB/BT/FM

16x2 Display – Version 3.0

## Recommended board Operating Condition:0,+12VDC,2A

- ❖ Independent digital volume control of 5.1 channels: 0 to -99 dB(50 Steps, 2dB per step)
- ❖ Independent Gain Control(Input Gain & Output Gain) of 5.1 channels. 0 to +14 dB (7steps, 2dB per step)
- ❖ Tone Control for Bass/Treble. -14 to +14dB. (14 steps, 2dB per step)
- ❖ Default 3 L/R input & one 5.1 Input. Additional Boards of Opt/Coax/HDMI can add according the version update.
- ❖ Default 5.1 Audio out for the above all inputs. Remote Option given for 2.1 Audio out.
- ❖ One time 5.1 Input settings in "Admin Settings" for Market Boards like HD Audio Rush, Etc.
- ❖ Last Memory of Volume, Gain recalls & Welcome Name automatically.
- ❖ Mute/Pause/LCD Back Light off, will be released automatically once you click Volume button.
- ❖ Stand-by/Pause will be released by First Click(Press) of Rotary Encoder.
- ❖ "Test Tone" provided on long press of "Gain" button. Before do it, play any one song by USB/BT/FM.
- ❖ According to the input Remote button few will work, few will not work.
- ❖ Normal Re-set & Factory Re-set provided.
- ❖ Bluetooth Name & Welcome name are same(can be edited).



USB

- ❖ Supported Audio file formats: mp3, Wav, FLAC, WMA, DTS(stereo only)
- ❖ Lyrical display on 16x2 LCD
- ❖ Song Selection can be by number. Provided song selection: Next, Previous, Next Folder, Previous Folder.
- ❖ Play/Pause, Mute. Play File option given (Single, Random, All etc.). Supports Equalizer (6 Type).



FM

- ❖ Press "Play/Pause" button for Auto Tune. Once it completed you can Select Next/Prev Channels.
- ❖ FM TUNE Single Freq. adjustment:- /+ button given. The same button for USB too for Next/Previous Folder.

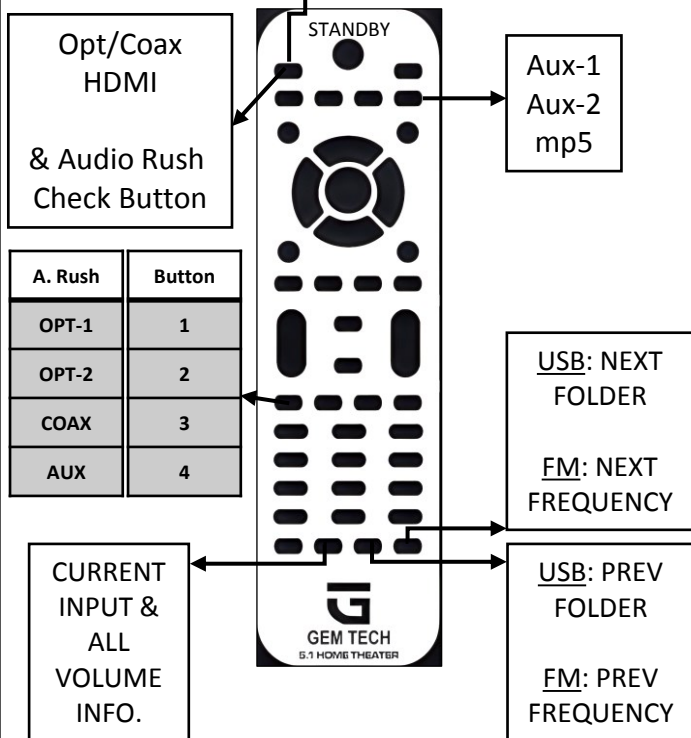


BLUETOOTH

- ❖ Version 5.0
- ❖ Name "GEM TECH" auto detects on mobile to connect.
- ❖ Remote control for audio : Next, Previous, Play/Pause.
- ❖ Audio AC3, AAC Supported.



Default	FT003 V1	FT003 V2	Ayino	DA51A
5.1	OPT	OPT	ARC	OPT
	COAX	COAX	HDMI	ARC
	ARC	ARC	OPT	COAX
		AUX	COAX	
			BT	
			PC	
			USB	



Use Gem Tech's Power Converter Board to avoid Humming & Display issues.



Additional support of PINs from Microcontroller for External board On/Off & Switching					
Pulse Support	Pin	Purpose / Board	Condition	Pulse	Volt
Power Control	R0	Transformer	Standby	High	3.3v
	R1		Play	Low	0v
Speaker Protection Board	B2	Gem Tech Board	Not Selected	High	3.3v
			Selected	Low	0v
	B6	Other Market Boards can be	Play	High	3.3v
			Standby or Mute	Low	0v
IR Control	IR	Market Board			
Input Switching	Opt1	HD Audio Rush	Solder 3 lines to Concern LED's -ve Line and 1 SW line, 1 GND.		
	Opt2		For Input Selection Press First Check button Opt/Coax on remote & 1 or 2 or 3 or 4.		
	Cax				
	SW				
	GND				
	B3	DA51A Board			
	B4	FT003 V1 or FT003 V2	B		
B5	A				
A0	SW				
Audio File Format	CS	FT003 V2	PCM		
	C3		DD		
	RE		DTS		
Ground Pins	GND	Use any one of this pin while you attach Gem Tech Board or Market Board			
	G1				
	G2				

Remote button functions		
Gem Tech's	mp5 Vire Brand's Slim Board	Ayino Board
		Inputs: ARC, HDMI, Opt, Coax, BT, PC, USB
<b>Mode</b>	Mode	
<b>2.1/5.1</b>	Menu	
<b>Ch-</b>	Previous	Previous
<b>Tune+</b>	Up	
<b>Ch+</b>	Next	Next
<b>Play/Pause(FM Scan Next)</b>	Play/Paus	Play/Paus
<b>Esc, Ch-</b>	Left	
<b>Gain</b>	Enter	
<b>Esc, Ch+</b>	Right	
<b>BackLight</b>	FM Scan	
<b>Esc, Tune-</b>	Vol-	
<b>Tune-</b>	Down	Tune -
<b>Esc, Tune+</b>	Vol+	Tune +
<b>Eq</b>	Eq	
<b>1</b>	1	Base -
<b>2</b>	2	Move Up
<b>3</b>	3	Base +
<b>4</b>	4	Move Left
<b>5</b>	5	Enter
<b>6</b>	6	Move Right
<b>Repeat</b>	Rep	
<b>7</b>	7	Treble -
<b>8</b>	8	Move Down
<b>9</b>	9	Treble +
<b>0</b>	0	
<b>USB Folder-Prev</b>	Movie	
<b>USB Folder-Next</b>	Music	

**WELCOME NAME EDIT**

A B C 1	D E F 2	G H I 3	J K L 4
M N O 5	P Q R 6	S T U 7	V W X 8
Y Z ' 9	* . & 0	( ) @ -	Confirm
Back Space CH-		Right Space CH+	
Move Cursor Left Front -		Move Cursor Right Rear +	
After finishing Welcome Name, press ESC button to confirm.			



QR code for Wire Connection & Google drive file link



NB: don't go admin settings while input mp5 selected.

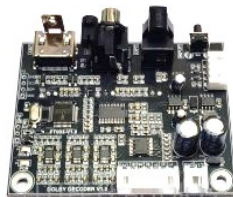
Admin Settings :-		
1 Software version	Press GAIN, EQ	Current Ver: 3.0
2 Factory Reset	Press GAIN, EQ, 0	
3 Gain Settings	Press GAIN, EQ, 1	
4 Welcome Name Settings	Press GAIN, EQ, 2	
5 HD Board Settings(Opt/Coax/HDMI)	Press GAIN, EQ, 3	
6 LCD Back Light Auto On/Off Settings	Press GAIN, EQ, 4	Press ESC to confirm.
7 Standby Enable/Disable Settings	Press GAIN, EQ, 5	
8 Test Tone check for Individual Channel	Press GAIN, EQ, 6	

## Can attach these Gem Tech Boards, Market Boards

Gem Tech's 6 Ch Spk Prot. Board



FT003-v1, FT003-v2



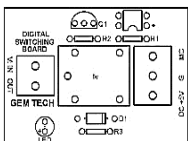
DA51A



mp5



Gem Tech Digital Switch



HD Audio Rush



Ayino

